



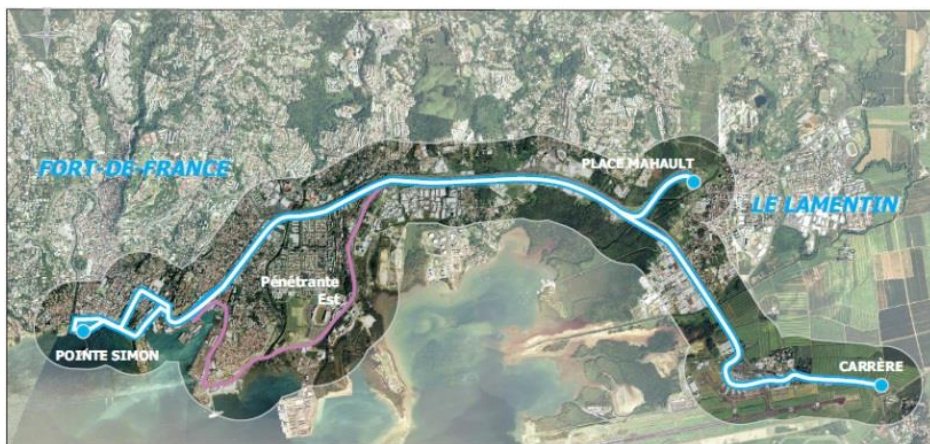
CASE STUDY



Analysis & proportioning studies of N5 interchanges for the Martinique Island public transport implementation

The local authority of Martinique Island decided to improve the public transport service by creating a bus line with a high level of service.

CeRyX Traffic System was the subcontractor of the engineering group of consulting firms which was chosen to be the main contractor support for this bus line. Our mission was to conduct urban development studies about the N5 lane – where the buses will run.



PROJECT DETAILS AND BACKGROUND

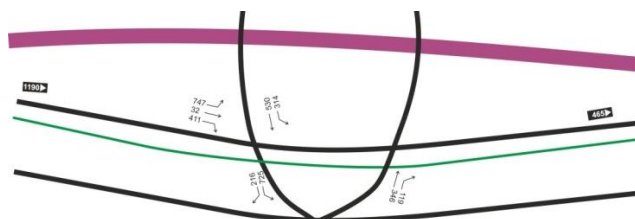
There is a bus station for each interchange on the N5 lane. Our mission was to check the functioning of these 5 interchanges, according to the actual traffic flow.

To optimize the BRT functioning, for a few crossroads, it has been necessary to propose a new lay out.

Until term of project, CeRyX Traffic System worked in a close partnership with the Region Martinique Council, which has realized the traffic estimation.

ANALYSIS AND METHODOLOGY

CeRyX Traffic System has had a particular look at the intersections safety: all interchanges have been managed by traffic lights or developed with a roundabout.



According to the existing traffic flows, CeRyX Traffic System has:

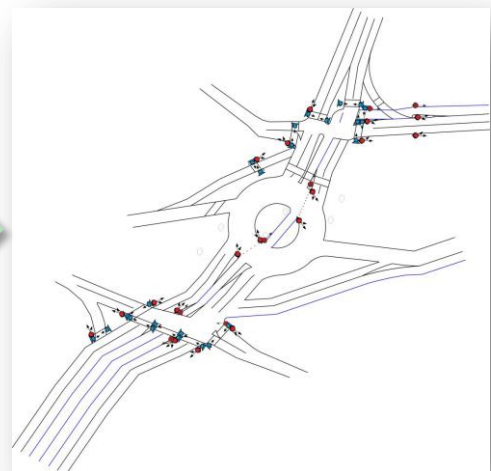
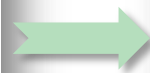
- Estimated the 2015 traffic situation
- Calculated the intersections traffic capacity in 2015
- Realized a technical drawing of the intersections to optimize the bus line circulation
- Proposed an adapted traffic light functioning for each intersection

SOLUTIONS DELIVERED

- Thanks to the CeRyX Traffic System technical expertise, potential difficulties have been identified all along the BRT road and at the intersections. New lay out have been proposed



First lay out proposal



Final CeRyX Traffic System's proposal

- CeRyX Traffic System gave all technical lay out drawing to Region Martinique Council to think and define the final lay out for the BRT road.